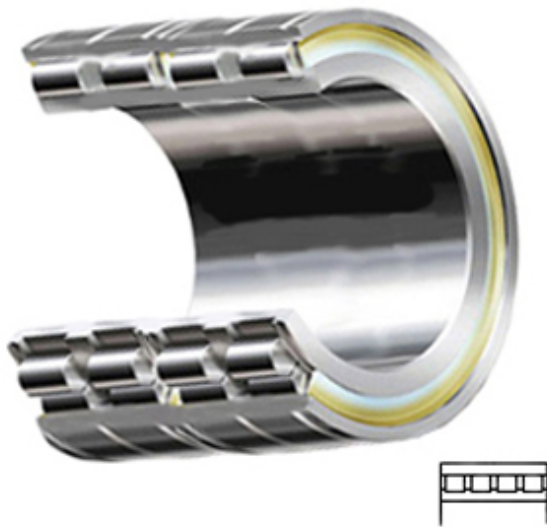




Shandong Tai Shi Te Bearing Co., Ltd.



SL15926 Bearing 2D drawings and 3D CAD models

5.118 Inch | 130 Millimeter x 7.087 Inch | 180 Millimeter x 3.78 Inch | 96 Millimeter INA SL15926 Cylindrical Roller Bearings

Bearing No. SL15926

Category	Cylindrical Roller Bearings
Inventory	0.0
Manufacturer Name	SCHAEFFLER GROUP
Minimum Buy Quantity	N/A
Weight	3.175
EAN	4047643176200
Product Group	B04144
Bore Profile	Straight
Cage Material	None
Precision Class	RBEC 1 ISO P0
Number of Rows of Rollers	Quadruple Row
Separable	Outer Ring - Both Sides
Rolling Element	Cylindrical Roller Bearing
Profile	Complete with Outer and Inner Ring
Snap Ring	No
Internal Clearance	C0-Medium
Retainer	No
Relubricatable	Yes
Inch - Metric	Metric
Other Features	Full Complement 5 Rib Inner Ring Plain Outer Ring Operating Temperature From -30 to 120 Deg
Long Description	130MM Bore; Straight Bore



Shandong Tai Shi Te Bearing Co., Ltd.

	Profile; 180MM Outside Diameter; 96MM Width; RBEC 1 ISO P0; Quadruple Row; Outer Ring - Both Sides Separable; No Snap Ring; Relubricatable; C0-Medium Internal Clearance; No
Category	Cylindrical Roller Bearing
UNSPSC	31171547
Harmonized Tariff Code	8482.50.00.00
Noun	Bearing
Manufacturer URL	http://www.ina.com
Manufacturer Item Number	SL15926A
Weight / LBS	7
B	3.78 Inch 96 Millimeter
d	5.118 Inch 130 Millimeter
D	7.087 Inch 180 Millimeter